

# 54" EDGE Pro (COB MicroLED)

VCD

## LOOK BEST EVERYDAY

PIXEL PITCHES:  
P0.625, 0.78, 0.93, 1.25, 1.56

ENERGY EFFICIENCY AT ITS CORE  
COB FLIP CHIP (COMMON CATHODE)

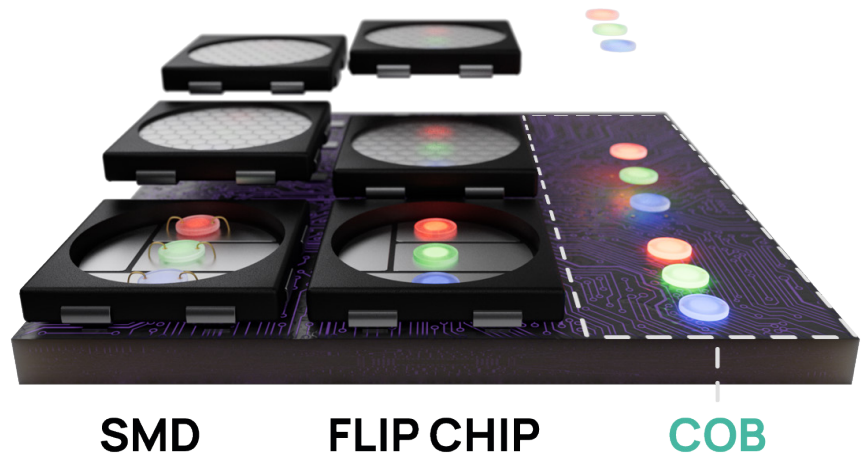
### The EDGE Series just got better!

The 54" EDGE Pro is a groundbreaking advancement in LED display technology, evolving from its Award Winning predecessor, the 55" EDGE.

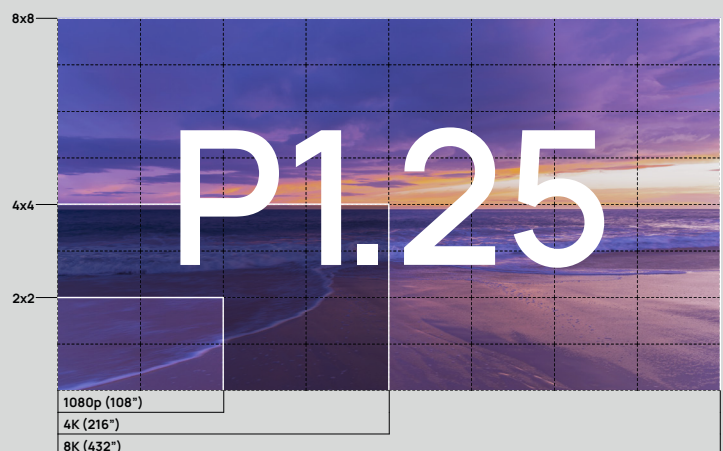
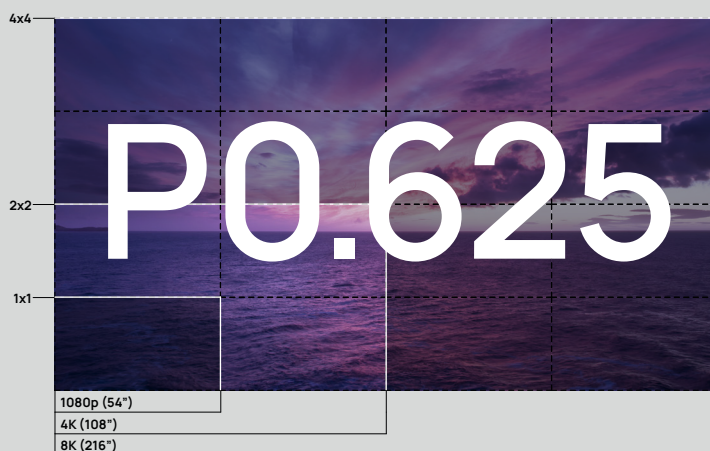
This innovative model enhances sustainability by employing Chip on Board, Flip Chip Common Cathode pixel technologies, as well as the traditional SMD options.

These cutting-edge features ensure superior energy efficiency, making the 54" EDGE Pro a smarter and more eco-friendly choice for top-tier fine pitch LED display applications.

### PIXEL COMPARISON DIAGRAM



### FIXED RESOLUTIONS OR CUSTOM SIZES



VCD



**Up to 40% Energy Saving\***



**Pixel Types: SMD, COB, IMD, MIP**



**HDR Capable**



**16-bit Grayscale**



**2 Mounting methods:**  
Direct wall or Vesa



**Modular Formation**



**100,000 Hours + Lifetime**



**Slim Design (28mm)**



**Front Service**



**GOB -**  
ultimate pixel protection technology



**Light Weight**



**160° Viewing Angles**



**16:9 Cabinet**



**Connect Model:**  
Direct HDMI connection  
(up to 1080p resolution)

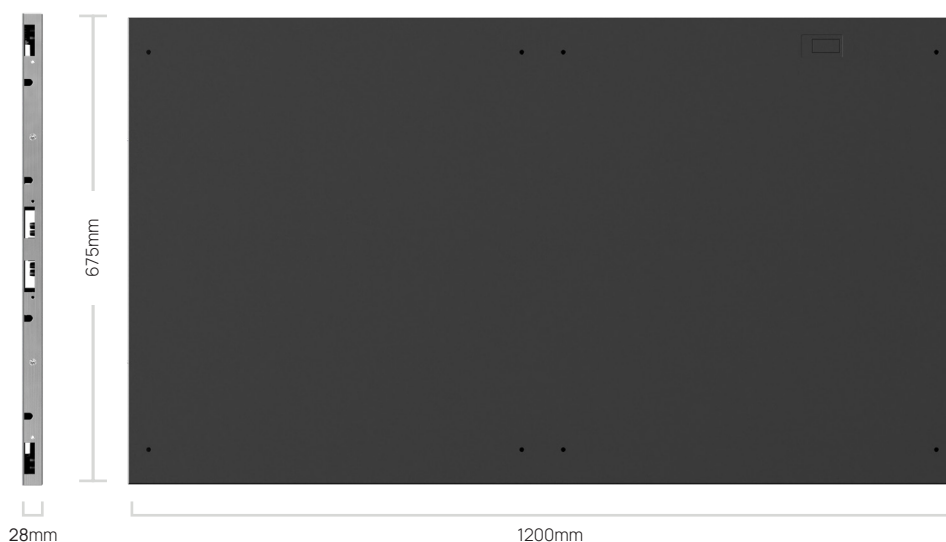
The 54" EDGE Pro uses four times fewer internal components compared to traditional LED display technologies. In addition to its energy-saving properties, it also reduces the amount of raw materials used during the manufacturing process.

## Two mounting methods

Having the freedom to attach a LED display to an existing mounting solution can make a big difference. The industry standard VESA or wall mounting options enables the EDGE platform to be attached in a matter of seconds for quick and easy mounting.

## Simplified installs

The 54" EDGE Pro, with its large die-cast cabinets, significantly reduces the need for cabinet fettling and mechanical adjustments. This enables fast and precise cabinet alignment, ensuring a perfectly uniform display with minimal effort.

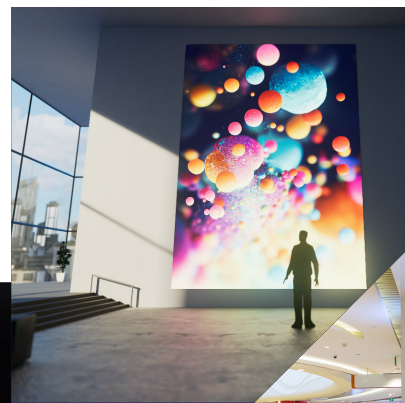




Corporate



Control Room



Immersive



Digital Signage

## SPECIFICATIONS

COB (MicroLED)					
Pixel Pitch (mm)	0.625	0.78	0.93	1.25	1.56
Module Size (W+H)	150x168.75mm 23.62x6.64in				
Module Resolution (W+H)	240x270	192x216	160x180	120x135	96x108
Cabinet Resolution (W+H)	1920x1080	1536x864	1280x720	960x540	768x432
Cabinet Size (W+D+H)	1200x28x675mm 47.24x1.1x26.57in				
Pixel Types	COB (SMD, IMD, MIP)				
Material	Die-cast Aluminium				
Cabinet Weight (kg/lbs)	17.5 / 38.58				
Cabinet Flatness	≤0.1mm				
Brightness	≤800cd/m <sup>2</sup> (adjustable)				
Colour Temperature	2000 ~ 12000 (adjustable)				
Viewing Angle (H/V)	160°				
Centre Distance Deviation of Luminescent Point	< 3%				
Contrast Ratio	≤1,000,000:1				
Peak Power Consumption (W/m <sup>2</sup> / W/ft <sup>2</sup> )	≤600/55.74	≤600/55.74	≤500/46.45	≤450/41.80	≤450/41.80
Average Power Consumption (W/m <sup>2</sup> / W/ft <sup>2</sup> )	≤240/22.30	≤240/22.30	≤200/18.58	≤180/16.72	≤180/16.72
Power Supply	AC100 ~ 240V (50~60Hz)				
Driving Mode	Constant current drive				
Frame Frequency	50/60Hz				
Refresh Rate	3840Hz				
Gray Scale	16bit				
Operating Temperature (°C / °F)	-10 ~ +40 / +14 ~ +104				
Operating Humidity	10% ~ 80%RH anti-fog				
Service Life	≤100,000Hrs				
Maintenance Mode	Front maintenance				

\*40% energy saving is calculated vs SMD technology when the 54" EDGE Pro display is run at a comparable brightness of 600nits

\*All data contained is subject to change.

Contact us: +86 755 2267 7271

[www.vodvisual.com](http://www.vodvisual.com)

**VOD**

# VOD

Please contact us if you have any questions,  
we're always happy to help

[www.vodvisual.com](http://www.vodvisual.com)

#### China Head Office

5D-701 Software  
Industry Base, Haitian  
2nd Road, Nanshan  
District, Shenzhen,  
Guangdong  
cn@vodvisual.com  
Tel: +86 755 2267 7271

#### UK Office

Unit 3 Clearwater Business  
Park Frankland Road  
Swindon, SN5 8YZ  
United Kingdom  
Tel: +44 (0) 20 3852 9500

#### UK Showroom

The Pavilion  
Merchant Square  
London, W2 1JZ  
United Kingdom

Tel: +44 (0) 20 3832 9500

#### USA Office

22 Boston Wharf Road,  
7th Floor,  
Boston, MA 02210  
United States

Tel: +1 (833) 533-7836

#### USA Showroom

123 Heiman Street,  
Suite 200, San Antonio,  
Texas 78205  
United States

Tel: +1 (833) 533-7836