



ALL-IN-ONE FINE PITCH (GOB/SMD/COB/MIP)

## Installation Free.

Designed for convenience and ease of use, this product is pre-configured and ready for immediate use straight from the box. Effortlessly turn it on, swiftly connect your device, and instantly embark on your digital journey.

## Fully Mobile.

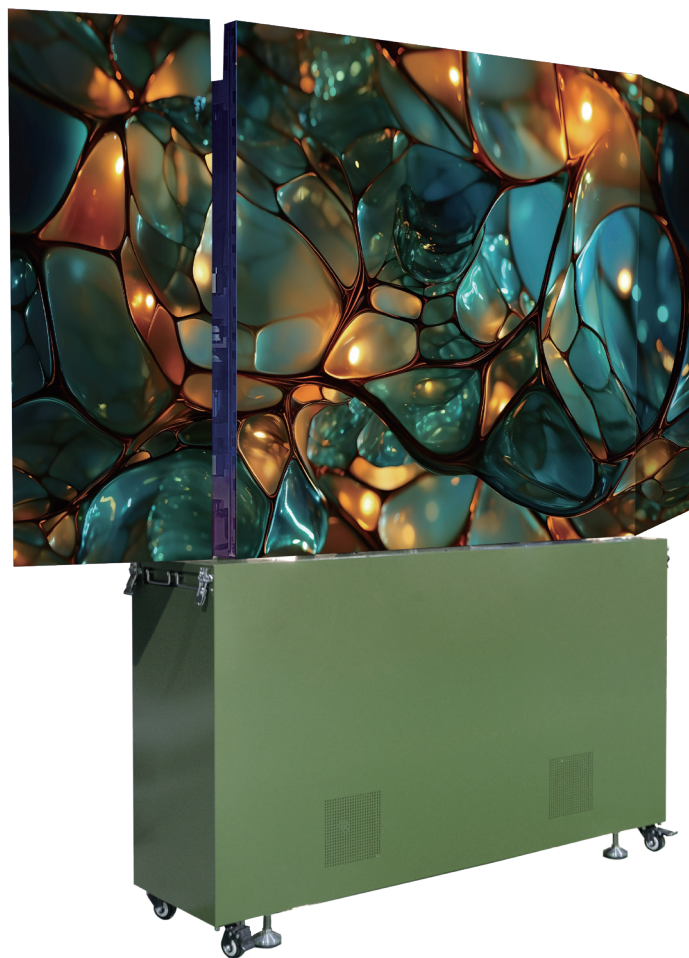
Featuring a sleek, compact design and equipped with smooth-gliding casters, the PROTEUS is specifically crafted to navigate through standard doors and fit comfortably into elevators, offering seamless mobility and hassle-free placement wherever you require.

## Adjustable Height.

With the included remote control, effortlessly adjust the screen height to match any setting, guaranteeing a clear, uninterrupted viewing experience suitable for any environment.

## Customizable.

Should 1080p or 4K UHD not meet your specific needs, we are equipped to create a custom display tailored precisely to your unique requirements.



16 bit   
grayscale

Up to  
**1000nits**   
peak brightness for your  
HDR photos and videos

**3840-7680Hz**  
high refresh rate

**2000-12000K**   
color temp

**1080P&4K**   
resolutions available



**COB**  
Energy Efficient



**Installation**  
Free



**Fully Mobile**



**Adjustable**  
Height



**Customizable**



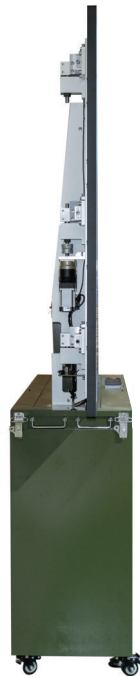
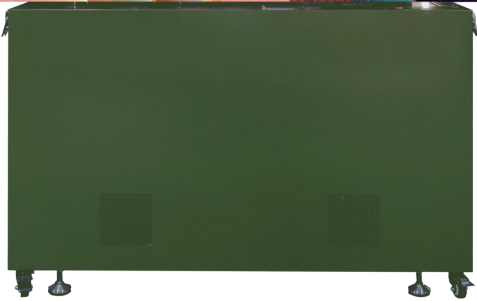
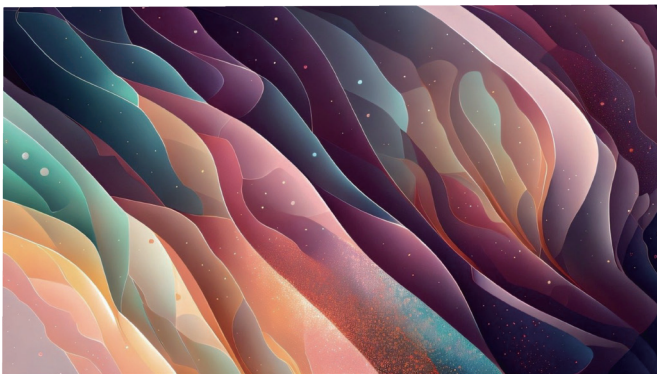
**1080p & 4K UHD**



### Versatility for an ever-changing landscape

The PROTEUS, an all-in-one LED display featuring automatic opening and closing, is engineered for a highly flexible and demanding market. It's ideally suited for a variety of applications including pop-up command centers, rental, hybrid meeting rooms, education, home theaters, events, road shows, and any other settings requiring a versatile, portable, and easy-to-install display solution.

## Product Overview



# SPECIFICATIONS

## PROTEUS AIO

	T110-2K	T130A-2K	T130B-4K	T136A-2K	T136B-4K
<b>PHYSICAL PARAMETERS</b>					
Pixel Pitch (mm)	P1.25	P1.5	P0.75	P1.56	P0.78
Pixel Configuration	COB (SMD / MIP Optional)	COB (SMD / MIP Optional)	COB (SMD / MIP Optional)	COB (SMD / MIP Optional)	COB (SMD / MIP Optional)
Display Size (mm) (W×H)	2400×1350	2880×1620	2880×1620	3000×1687.5	3000×1687.5
Overall Size (mm) (W×H×D)	1650×1760×520	2170×2084×520	2170×2084×520	2050×2150×520	2050×2150×520
Overall Weight (kg)	470	520	520	550	550
<b>OPTICAL PARAMETERS</b>					
Resolution (W×H)	1920×1080	1920×1080	3840×2160	1920×1080	3840×2160
Frame Rate (Hz)	50/60	50/60	50/60	50/60	50/60
Refresh Rate (Hz)	3840~7680	3840~7680	3840~7680	3840~7680	3840~7680
Brightness (nits)	1000	1000	1000	1000	1000
Gray Scale (bit)	14~16	14~16	14~16	14~16	14~16
Color Temp (K)	2000~12000	2000~12000	2000~12000	2000~12000	2000~12000
<b>ELECTRICAL PARAMETERS</b>					
Max. Power Consumption (W)	≤1460	≤2100	≤2800	≤2280	≤3030
Avg. Power Consumption (W)	≤600	≤840	≤1120	≤900	≤1200
Working Voltage (V)	AC: 110V~240V, 50~60Hz	AC: 110V~240V, 50~60Hz	AC: 110V~240V, 50~60Hz	AC: 110V~240V, 50~60Hz	AC: 110V~240V, 50~60Hz
<b>ADDITIONAL FEATURES</b>					
Lifetime (H)	100,000	100,000	100,000	100,000	100,000
Operation Temp (°C)	-10~+40	-10~+40	-10~+40	-10~+40	-10~+40
Storage Temp (°C)	-25~+60	-25~+60	-25~+60	-25~+60	-25~+60
Operation Humidity (RH)	10%~80%, no condensation	10%~80%, no condensation	10%~80%, no condensation	10%~80%, no condensation	10%~80%, no condensation
Control Panel Type	Remote control / Touch panel	Remote control / Touch panel	Remote control / Touch panel	Remote control / Touch panel	Remote control / Touch panel
Interface	HDMI×2, 3.5×1, USB3.0×2, USB2.0×1, RJ45×1	HDMI×2, 3.5×1, USB3.0×2, USB2.0×1, RJ45×1	HDMI×2, 3.5×1, USB3.0×2, USB2.0×1, RJ45×1	HDMI×2, 3.5×1, USB3.0×2, USB2.0×1, RJ45×1	HDMI×2, 3.5×1, USB3.0×2, USB2.0×1, RJ45×1
WIFI Mode	Wifi-5G band×1, Wifi-2.4G band×1, Wifi-AP×1	Wifi-5G band×1, Wifi-2.4G band×1, Wifi-AP×1	Wifi-5G band×1, Wifi-2.4G band×1, Wifi-AP×1	Wifi-5G band×1, Wifi-2.4G band×1, Wifi-AP×1	Wifi-5G band×1, Wifi-2.4G band×1, Wifi-AP×1



\*All specifications are subject to change according to the specific situation of the project (the product shall be subjected to the submitted contract specification)

Contact us: +86 755 2267 7271

[www.vodvisual.com](http://www.vodvisual.com)

**VCD**



Please contact us if you have any questions,  
we're always happy to help

[www.vodvisual.com](http://www.vodvisual.com)

**China Head Office**

5D-701 Software  
Industry Base, Haitian  
2nd Road, Nanshan  
District, Shenzhen,  
Guangdong  
[cn@vodvisual.com](mailto:cn@vodvisual.com)  
Tel: +86 755 2267 7271

**UK Office**

Unit 3 Clearwater Business  
Park Frankland Road  
Swindon, SN5 8YZ  
United Kingdom  
Tel: +44 (0) 20 3852 9500

**UK Showroom**

The Pavilion  
Merchant Square  
London, W2 1JZ  
United Kingdom  
Tel: +44 (0) 20 3832 9500

**USA Office**

22 Boston Wharf Road,  
7th Floor,  
Boston, MA 02210  
United States  
Tel: +1 (833) 533-7836

**USA Showroom**

123 Heiman Street,  
Suite 200, San Antonio,  
Texas 78205  
United States  
Tel: +1 (833) 533-7836